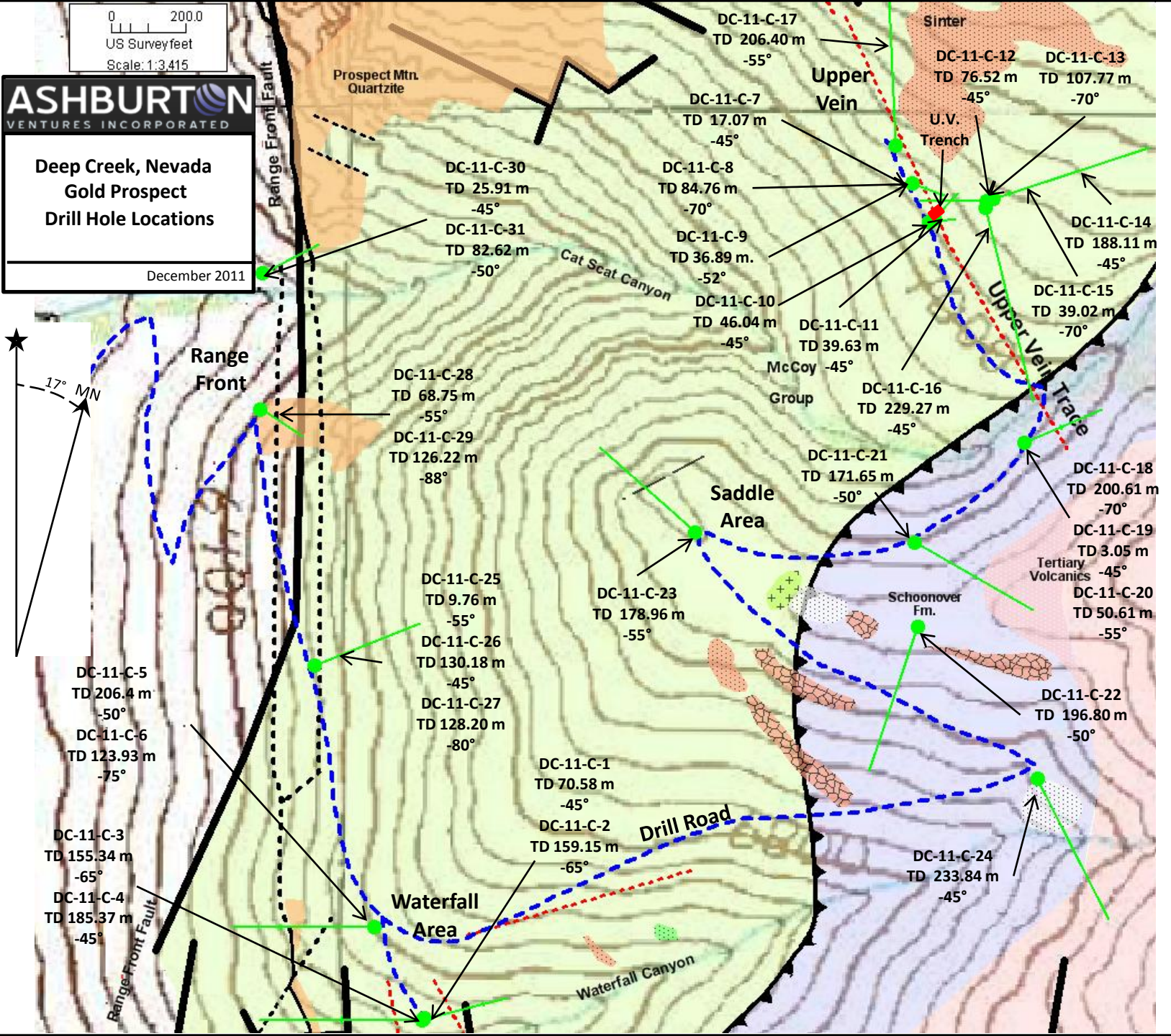
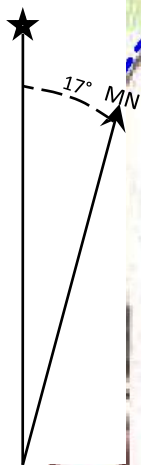


ASHBURTON
VENTURES INCORPORATED

**Deep Creek, Nevada
Gold Prospect
Drill Hole Locations**

December 2011



DC-11-C-5
TD 206.4 m
-50°
DC-11-C-6
TD 123.93 m
-75°

DC-11-C-3
TD 155.34 m
-65°
DC-11-C-4
TD 185.37 m
-45°

DC-11-C-25
TD 9.76 m
-55°
DC-11-C-26
TD 130.18 m
-45°
DC-11-C-27
TD 128.20 m
-80°

DC-11-C-1
TD 70.58 m
-45°
DC-11-C-2
TD 159.15 m
-65°

DC-11-C-28
TD 68.75 m
-55°
DC-11-C-29
TD 126.22 m
-88°

DC-11-C-30
TD 25.91 m
-45°
DC-11-C-31
TD 82.62 m
-50°

DC-11-C-23
TD 178.96 m
-55°

DC-11-C-8
TD 84.76 m
-70°
DC-11-C-9
TD 36.89 m
-52°
DC-11-C-10
TD 46.04 m
-45°

DC-11-C-17
TD 206.40 m
-55°

DC-11-C-21
TD 171.65 m
-50°

DC-11-C-11
TD 39.63 m
-45°

DC-11-C-7
TD 17.07 m
-45°

DC-11-C-17
TD 206.40 m
-55°

DC-11-C-22
TD 196.80 m
-50°

DC-11-C-16
TD 229.27 m
-45°

DC-11-C-15
TD 39.02 m
-70°

DC-11-C-12
TD 76.52 m
-45°

DC-11-C-18
TD 200.61 m
-70°

DC-11-C-14
TD 188.11 m
-45°

DC-11-C-13
TD 107.77 m
-70°

DC-11-C-19
TD 3.05 m
-45°
DC-11-C-20
TD 50.61 m
-55°

DC-11-C-14
TD 188.11 m
-45°